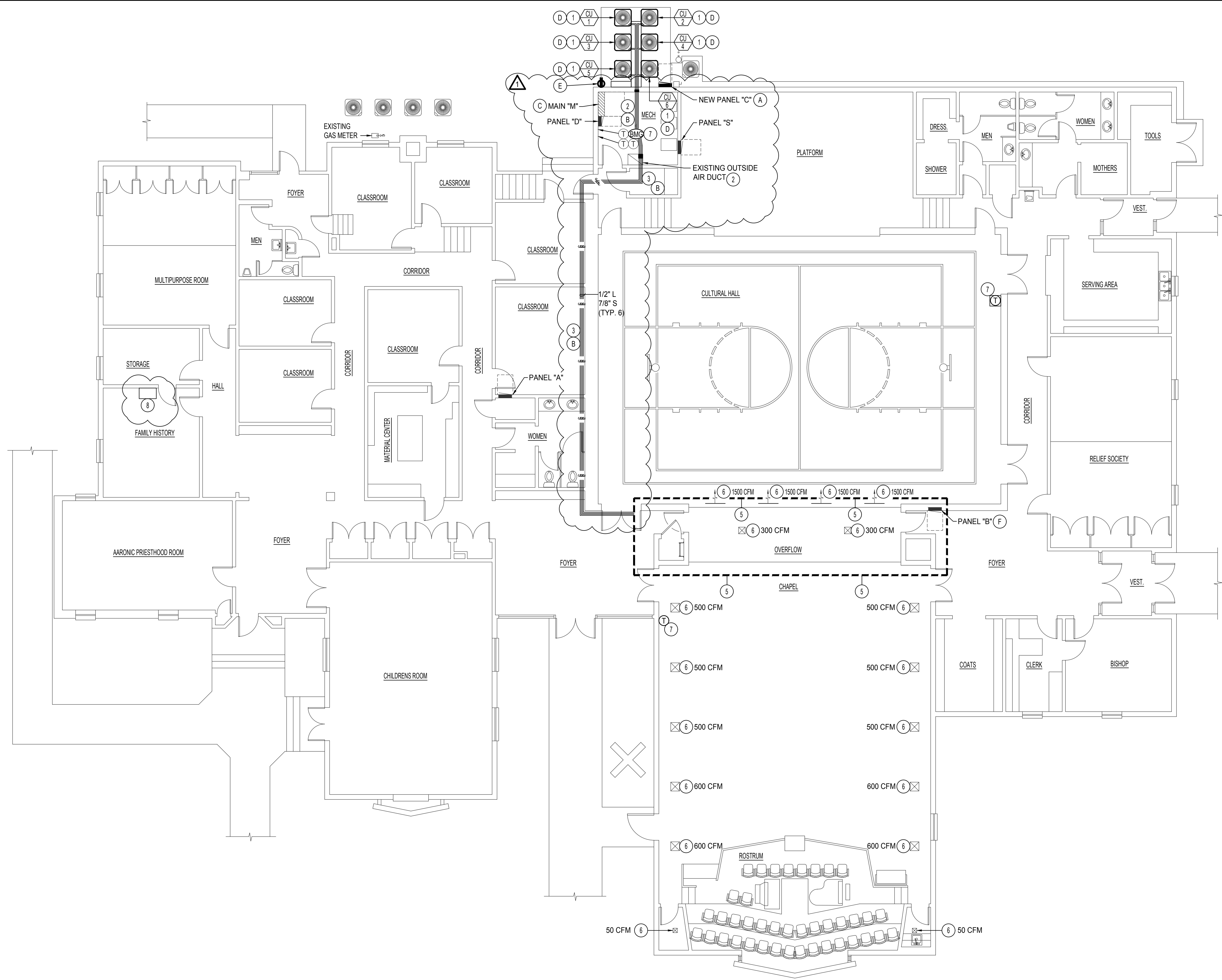
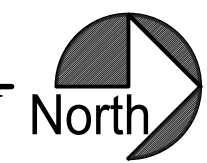


\\esa.local\I-Drive\22\22096 LDS Shoshone HVAC\22096 LDS Shoshone HVAC.dwg Jul 12, 2022 - 9:30am



MECHANICAL FLOOR PLAN
SCALE: 1/8" = 1'-0"



PLAN NOTES:

- 1 INSTALL NEW CONDENSING UNIT ON 1" VIBRATION ISOLATION PADS.
- 2 RE-USE EXISTING REFRIGERANT PENETRATION IF POSSIBLE. DEMO MECHANICAL WALL AS REQUIRED FOR NEW ROUTE. SEAL WEATHER TIGHT AFTER WORK IS COMPLETE. ROUTE REFRIGERATION LINE EXPOSED IN MECHANICAL ROOM TO EXISTING COMBUSTION AIR DUCTWORK THROUGH ROOF. COVER ALL PIPING WITH REFRIGERANT COVERS. COLOR TO MATCH EXISTING CONDITIONS. COORDINATE WITH CONTROL SUBCONTRACTORS TO ROUTE CONDUIT WITH NEW LINE SETS. SEE DETAIL E & F ON SHEET ME-4.
- 3 ROUTE REFRIGERATION LINES ON ROOF SPACE. SEE DETAIL G ON SHEET ME-3. REFRIGERATION LINES TO MOUNT ON SUPPORTS EVERY 10'. SEE SPECIFICATIONS.
- 4 RAISE REFRIGERANT LINES THROUGH EXISTING COMBUSTION AIR DUCTWORK TO ROOF. VERIFY EXISTING CONDITIONS DURING PRE-BID.
- 5 SEE ENLARGED SCALE MECHANICAL MEZZANINE PLAN ON SHEET ME-3.
- 6 BALANCE TO CFM AS INDICATED ON PLANS.
- 7 INSTALL NEW CONTROLS AS PER DETAILS B & C ON SHEET ME-4. SEE SHEETS ME-5 AND ME-6 FOR WIRING DIAGRAM.
- 8 EXISTING INTERNET ACCESS LOCATION.

ELEC. PLAN NOTES:

- A NEW PANEL "C": RUN CONDUIT AND WIRE TO EXISTING PANEL "M". PROVIDE AND INSTALL NEW BREAKER IN PANEL "M". SEE PANEL SCHEDULE ON SHEET ME-4 FOR WIRE, CONDUIT AND BREAKER SIZE. LABEL BREAKERS.
- B PROVIDE AND INSTALL THERMOSTAT CABLE BETWEEN INDOOR FURNACES AND OUTDOOR UNIT AS PER MANUFACTURER DIRECTIONS. COORDINATE WITH MECHANICAL TO ROUTE WITH REFRIGERATION LINES.
- C SEE PANEL SCHEDULE C ME-4 FOR NEW BREAKER TO BE INSTALLED IN PANEL "M".
- D RUN 3#8, 1#10 GROUND, 3/4" CONDUIT TO NEW PANEL "C".
- E NEW WALL RECEPTACLE, G.F.C.I. 20 AMP RECEPTACLE WITH "IN-USE" W.P. COVER. 2#12, 1#12 GROUND, 1/2" CONDUIT TO NEW PANEL "C".
- F PROVIDE & INSTALL NEW BREAKERS IN EXISTING PANEL "B". SEE PANEL SCHEDULES "F1" AND "F2" ON SHEET ME-4 FOR WIRE SIZE.

MECHANICAL LEGEND

SYMBOL	DESCRIPTION
	ELECTRONIC THERMOSTAT
	EQUIPMENT SYMBOL
	HAND DAMPER
	ROUND BRANCH DUCT WITH HAND DAMPER
	INSULATED FLEXIBLE DUCT
	RETURN AIR OR EXHAUST GRILLE
	CEILING DIFFUSER
	ROOF MOUNTED UPBLAST EXHAUST FAN

FIRE NOTES:

- A THE CONTRACTOR SHALL FIRE CAULK ALL DUCT OR PIPE PENETRATIONS THRU FIRE RATED WALLS, FLOORS, OR CEILINGS.
- B THE CONTRACTOR SHALL INSTALL INTUMESCENT FIRE BLOCKS ON PLASTIC PENETRATIONS THRU FIRE RATED WALLS, FLOORS, OR CEILINGS.

REVISIONS:

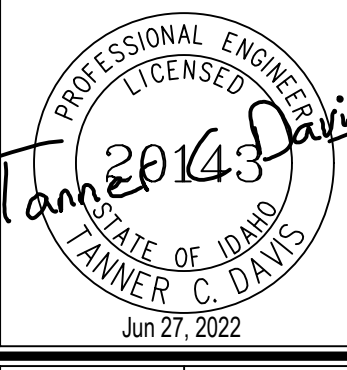
- 1 ADDENDUM #1 - 07/11/22



**Engineered Systems Associates
Mechanical Engineers**
Dwayne Sudweeks P.E., Dave Hansen P.E., Tanner Davis P.E.
1355 East Center - Pocatello, Idaho 83201
Phone: (208) 233-0501 email: esa@engsystems.com

PROPERTY # 503-9002
HVAC REPLACEMENT FOR:
LDS SHOSHONE 1st WARD
SHOSHONE, IDAHO
MECHANICAL FLOOR PLAN

PROJECT:
SHEET TITLE:



DRWN. BY: TCD	CKD. BY: DCS
JOB NO. 22096	DATE 06/27/22

SHEET:
ME-2
OF: 6